

# Rental 3D Microscope Troika Anicam HD Plus



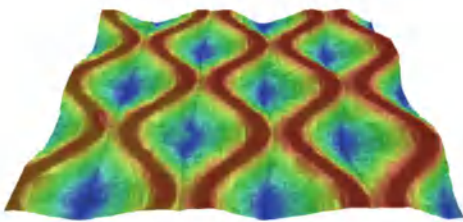
LINK & MATCH  
Graphic and Packaging

## Benefit :

- ✓ Pengukuran volume sel silinder  
Rotogravure, roll Anilox & Flexo Plate
- ✓ Validasi kondisi silinder  
Rotogravure, roll Anilox & Flexo Plate
- ✓ Deteksi keausan & penyimpangan silinder
- ✓ Validasi konsistensi warna  
pada hasil cetak
- ✓ Analisis kedalaman & area sel
- ✓ Laporan digital Lengkap dengan 3D scan
- ✓ Lebih mudah dibandingkan pengukuran manual



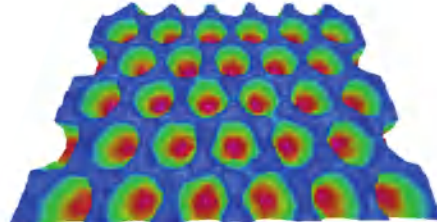
### Hasil 3D Scan Rotogravure Cylinder



#### Data Pengukuran :

- Kedalaman Sel
- Volume Sel
- Ketinggian Sel
- Screen Angle
- Bukaan Sel
- Screen Count
- Dinding Sel
- Channel

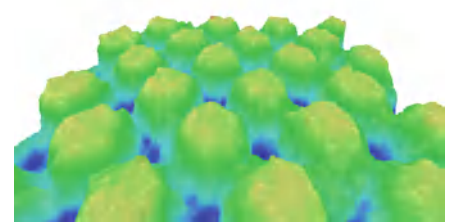
### Hasil 3D Scan Anilox Cylinder



#### Data Pengukuran :

- Kedalaman Sel
- Screen Angle
- Volume Sel
- Screen Count
- Bukaan Sel
- Dinding Sel

### Hasil 3D Scan Flexo Plate



#### Data Pengukuran :

- Kedalaman Dot
- Lebar dot
- Tinggi Dot
- Persentase Dot
- Diameter Dot
- Screen Angel
- Jarak Dot
- Screen Count



## BIAYA RENTAL :

1. Troika AniCam HD Plus  
Rp 500.000/Jam minimum rental  
3 jam (Diluar PPN).
2. Transportasi per-kunjungan  
Rp 500.000 (Jabodetabek).

## EFISIENSI = MORE PROFIT

Hubungi kami untuk informasi lebih lanjut :

Telp : 021 2298 2661 / 0811 9840 350

info@link-match.com / www.link-match.com

# AniCAM Analysis

Report by: **Operator A**

Roll ID: **Sample Anilox**

Job Date: **29/08/2024, 11:38**

Customer: **Sample Test**

## Roll Condition and Specification

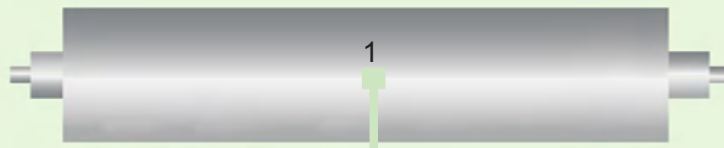
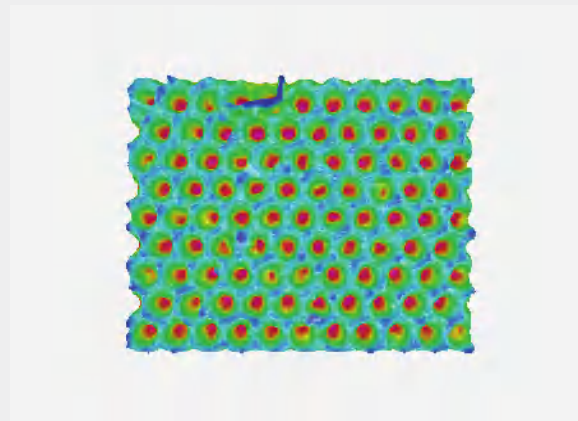
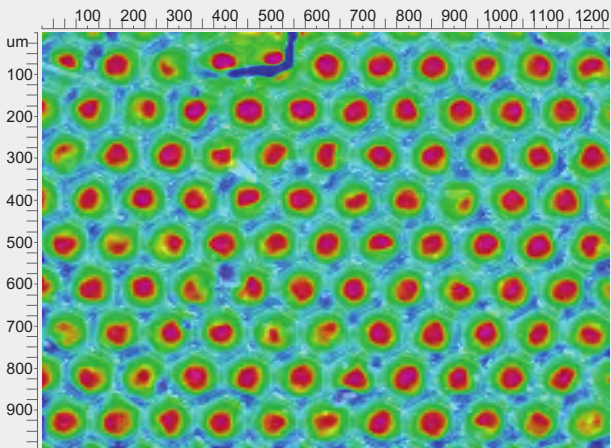
Cell Opening: **108.7 um**

Cell Wall: **4.0 um**

Screen Angle: **60 degrees**

Screen Count: **224 lpi**

## Volume Information



Volume  
Depth

**15.8**  
**52**

**15.8 cm<sup>3</sup>/m<sup>2</sup>**  
**52 um**

[C6/6.0,R7,E240/24,x4/3]

Comments:

Comment For Sample Anilox

Signature

# Gravure Cell Analysis

Report By: **Operator A**

Customer: **Sample Test**

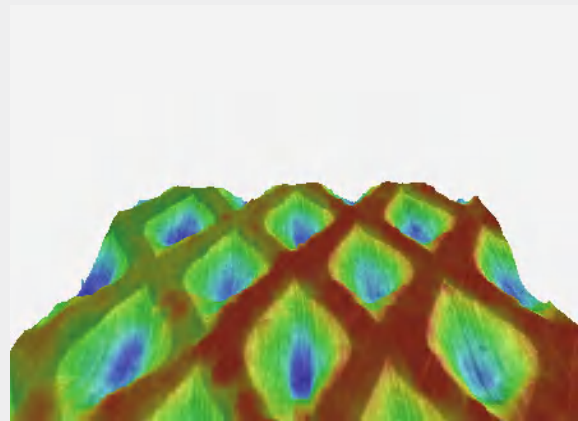
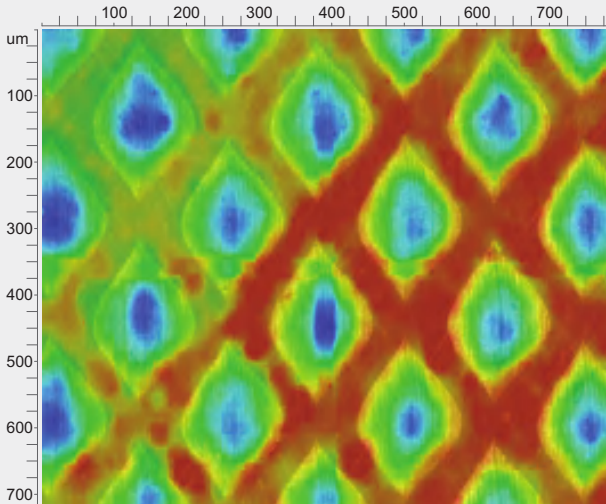
Cylinder ID: **Sample Cylinder**

Job Date **29/08/2024, 11:17**

## Cylinder Condition and Specification

Depth:	<b>34 um</b>	Stylus Angle:	<b>0.0</b>
Cell Volume:	<b>9.3 ml/m<sup>2</sup></b>	Cell Opening x Height:	<b>150 x 198 um</b>
Screen Count:	<b>145 lpi</b>	Cell Wall:	<b>35 um</b>
Screen Angle:	<b>45 degrees</b>	Channel:	<b>95</b>

## Volume Information



Cell Volume:	<b>9.3</b>	<b>9.3 ml/m<sup>2</sup></b>
Depth:	<b>34</b>	<b>34 um</b>

[C0/0.0,R-1,E85/16,x4/0]

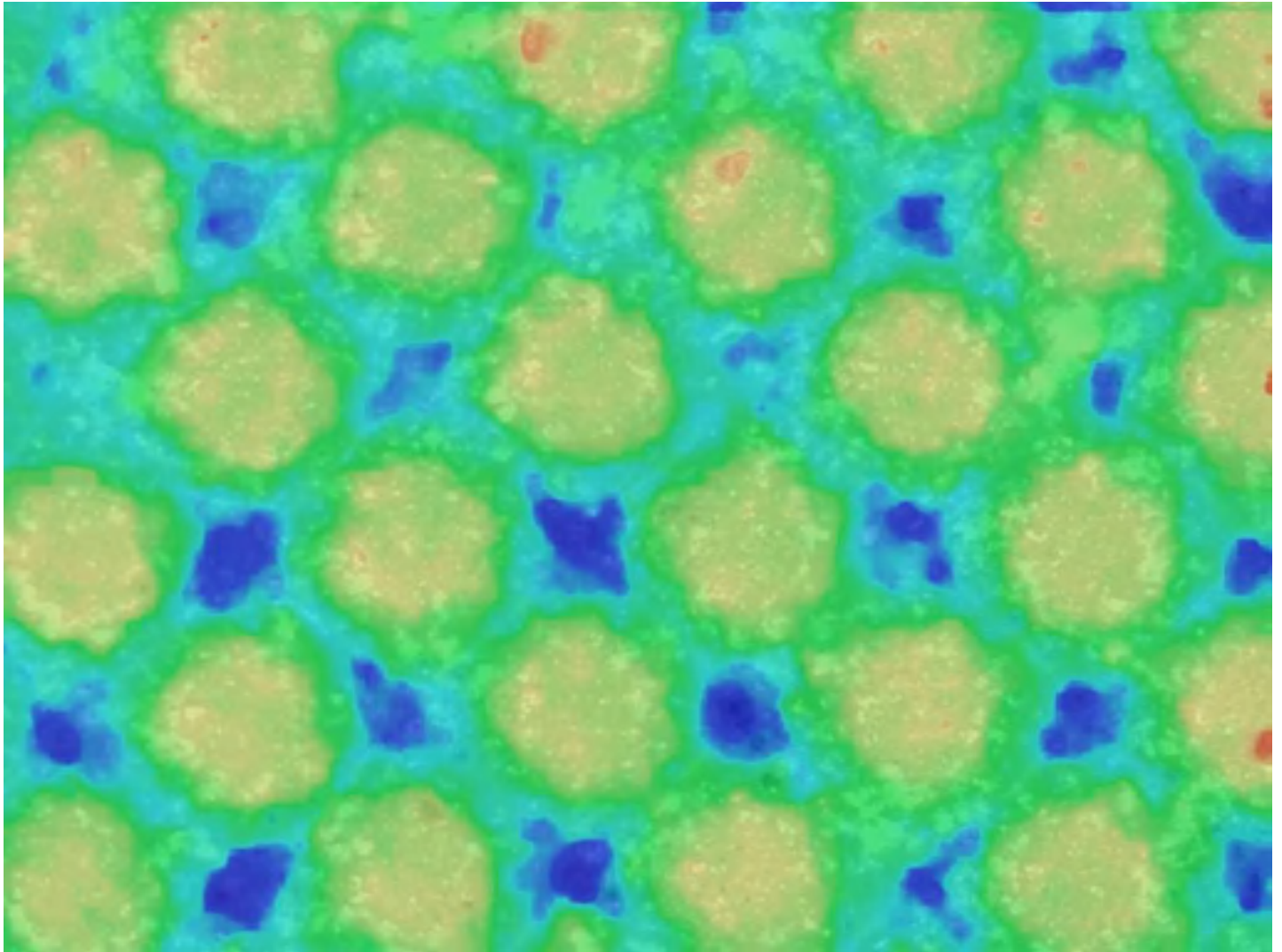
Comments:  
Cylinder Test

Signature

# Flexo Plate Analysis



Plate Sample



[C8/14.0,R15,E220/16,x4/0]

---

Customer: Sample Test

Plate Info: Plate Sample

Operator: Operator A

Date: 10/10/2024, 09:59

---

Percent Dot: 20.5	Height: 47 um
Screen Count: 121 lpi	Diameter: 112 um
Screen Angle: 46 degrees	Spacing: 210 um

---

Depth 1: 38 um	Width: 141 um
Depth 2: 41 um	Angle: 55 deg